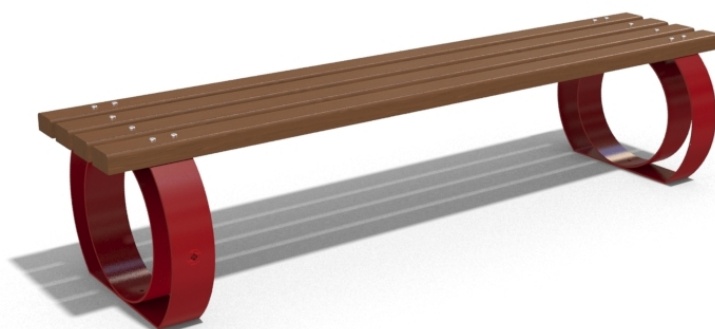
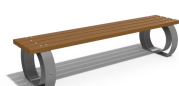
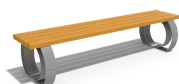
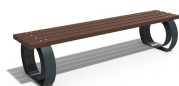


## METAL BENCH 50 MR



**LEGS Steel:**



RAL 702...



RAL 900...



RAL 900...



RAL 900...

**BOLT Stainless Steel:**



81 AISI...

**CIRCLE Stainless Steel:**



81 AISI...

Classic metal bench without backrest – version of model 52. Made out of certified wood and metal. Electro-galvanizing and powder coating protects the metal from corrosion and increases its performance. A special coating is applied to the planks, which protects them from aggressive weather conditions and prolongs their life. The elements connecting ...

**Diameter: 190,0 cm**

**Length: 54,0 cm**

**Height: 42,0 cm**



AR / VR



WEBSITE



371,00 €



AR / VR



WEBSITE