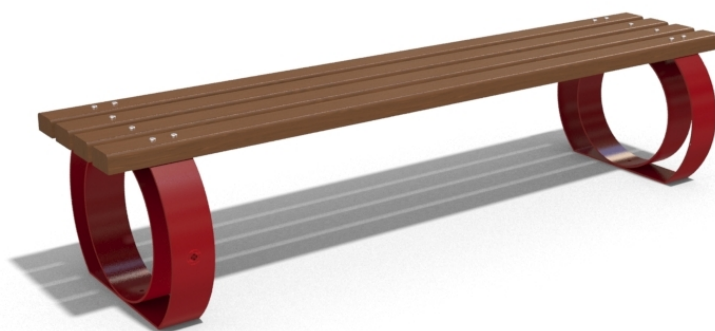
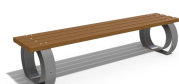
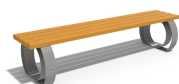
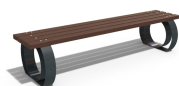


## METAL BENCH 50 MS



**LEGS Steel:**



RAL 702...



RAL 900...



RAL 900...



RAL 900...

**BOLT Stainless Steel:**



81 AISI...

**CIRCLE Stainless Steel:**



81 AISI...

Classic metal bench without backrest – version of model 52. Made out of certified wood and metal. Electro-galvanizing and powder coating protects the metal from corrosion and increases its performance. A special coating is applied to the planks, which protects them from aggressive weather conditions and prolongs their life. The elements connecting ...

**Diameter:** 190,0 cm

**Length:** 54,0 cm

**Height:** 42,0 cm



AR / VR



WEBSITE



302,00 €



AR / VR



WEBSITE